

Efficient & Powerful Liquid-cooled Motors

Advantages

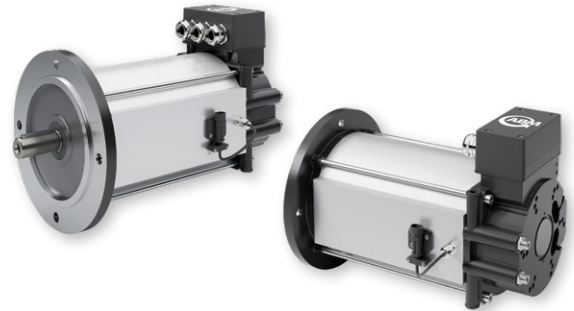
Liquid-cooled motors are particularly well suited **for industrial and mobile applications**. They excel with high power density, energy efficiency and reliability.

For systems solutions liquid-cooled motors can be combined with ABM gearboxes and controlled by ABM inverters.

- High Power density
- Expanded period of use
- Highly efficient heat dissipation
- Extraordinarily compact design
- Robust: low-vibration and vibration-resistant

Technical Data

- Frame Size: 80 – 160
- Output range: up to 100 kW
- Controllable with ABM inverters
- Can be combined with all ABM gearboxes (straight shaft helical, parallel shaft helical and right angle bevel gearboxes)
- Radial or axial cooling
- Cooling with liquids, i.e. water-glycol-mixture or oil



Application Examples

- Construction machinery (e.g. excavators)
- Equipment for the food industry
- High performance electric vehicles
- Pallet trucks
- Plastic injection moulding machines
- Pumps
- Watercraft



Contact

ABM Greiffenberger Antriebstechnik GmbH | Postfach 140 | D - 95614 Marktredwitz
 Phone: +49 9231 67-0 | Fax: +49 9231 67-5145
 info@abm-drives.com | www.abm-drives.com