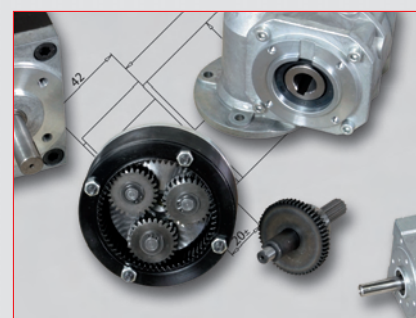
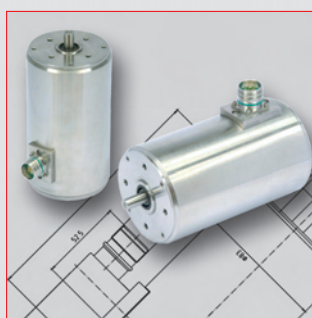
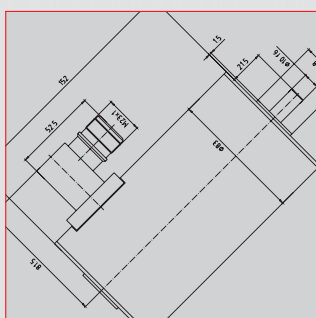


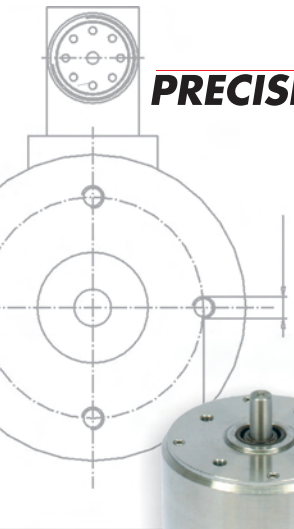


**PRECISION** IS ON THE MOVE

## **Stainless Steel Drives**

for food and pharmaceutical industry





**PRECISION IS ON THE MOVE**



## STAINLESS STEEL Stainless Steel Drives

Stainless steel drives have a wide range of applications, as for example food industry, packaging industry, chemical industry, pharmaceutical industry, process engineering or clean room technology.

### Materials:

- food-safe stainless steels 1.4301
- special materials available on request

### Applications:

- conveyor belt drives
- positioning drives
- pump drives
- actuator drives

### Accessories:

- brakes
- encoders
- gears on demand

### Product advantages:

- applicable under extreme environmental conditions (salt, acid and leach containing atmosphere)
- application under critical conditions (for example pharmaceutical and food industry)
- smooth surfaces – no accumulation of particles, therefore easy to clean
- ideal construction – compact, efficient, closed housings, cooling by convection
- all kinds of motors feasible – AC, DC, brushless-DC
- high stability

### Brushless DC Motor

Connection: 42 V-DC, operation at an external standard controller (block commutation) rotor position detection via 3 "Hall" sensors

Insulation class: B, optional F

Protection class: IP 65 / IP 67

Special design: Design for short-time duty with higher output, further voltages and speeds on demand

Options: Special designed shafts, flanges and customized motors

	Output approx. Watts	Nominal speed rpm	Nominal torque approx. Ncm	Diameter approx. mm	Length approx. mm
<b>M543</b>	44	3000	14	54	130
<b>M563</b>	68	3000	21	54	150
<b>M643</b>	78	3000	25	70	130
<b>M663</b>	119	3000	38	70	150
<b>M843</b>	125	3000	40	85	130
<b>M863</b>	200	3000	64	85	150



## Three Phase Asynchronous Motor

- Connection:** Three phase 400 V, 50 Hz, optional dimensioning for other voltages/frequencies  
Optional dimensioning for frequency converters with 3 x 230 V
- Insulation class:** B, optional F
- Protection class:** IP 65 / IP 67
- Special design:** Design for short-time duty with higher output, further voltages and speeds on demand
- Options:** Special designed shafts, flanges and customized motors

	Output approx. Watts	Nominal speed rpm	Nominal torque approx. Ncm	Diameter approx. mm	Length approx. mm
<b>D564</b>	8	1250	6	54	130
<b>D562</b>	19	2650	7	54	130
<b>D664</b>	24	1250	15	70	130
<b>D662</b>	40	2650	14	70	130
<b>D884</b>	48	1300	36	85	130
<b>D882</b>	100	2700	36	85	130
<b>D9584</b>	100	1300	77	95	180
<b>D9582</b>	220	2700	80	95	180

## Single Phase Asynchronous Motor

- Connection:** Single phase 230 V, 50 Hz, optional dimensioning for 110 V, 60 Hz or other voltages/frequencies
- Insulation class:** B, optional F
- Protection class:** IP 65 / IP 67
- Special design:** Design for short-time duty with higher output, further voltages and speeds on demand
- Options:** Special designed shafts, flanges and customized motors

	Output approx. Watts	Nominal speed rpm	Nominal torque approx. Ncm	Diameter approx. mm	Length approx. mm
<b>K664</b>	13	1250	10	70	130
<b>K662</b>	26	2650	9	70	130
<b>K884</b>	40	1300	30	85	150
<b>K882</b>	77	2700	27	85	150
<b>K9584</b>	100	1300	78	95	180
<b>K9582</b>	140	2700	65	95	180



**GEFEG-NECKAR**  
**Antriebssysteme GmbH**  
Industriestraße 25 – 27  
78559 Gosheim  
Germany

Phone +49(0)7426/608-0  
Fax +49(0)7426/608-410

[www.gefeg-neckar.de](http://www.gefeg-neckar.de)  
[info@gefeg-neckar.de](mailto:info@gefeg-neckar.de)